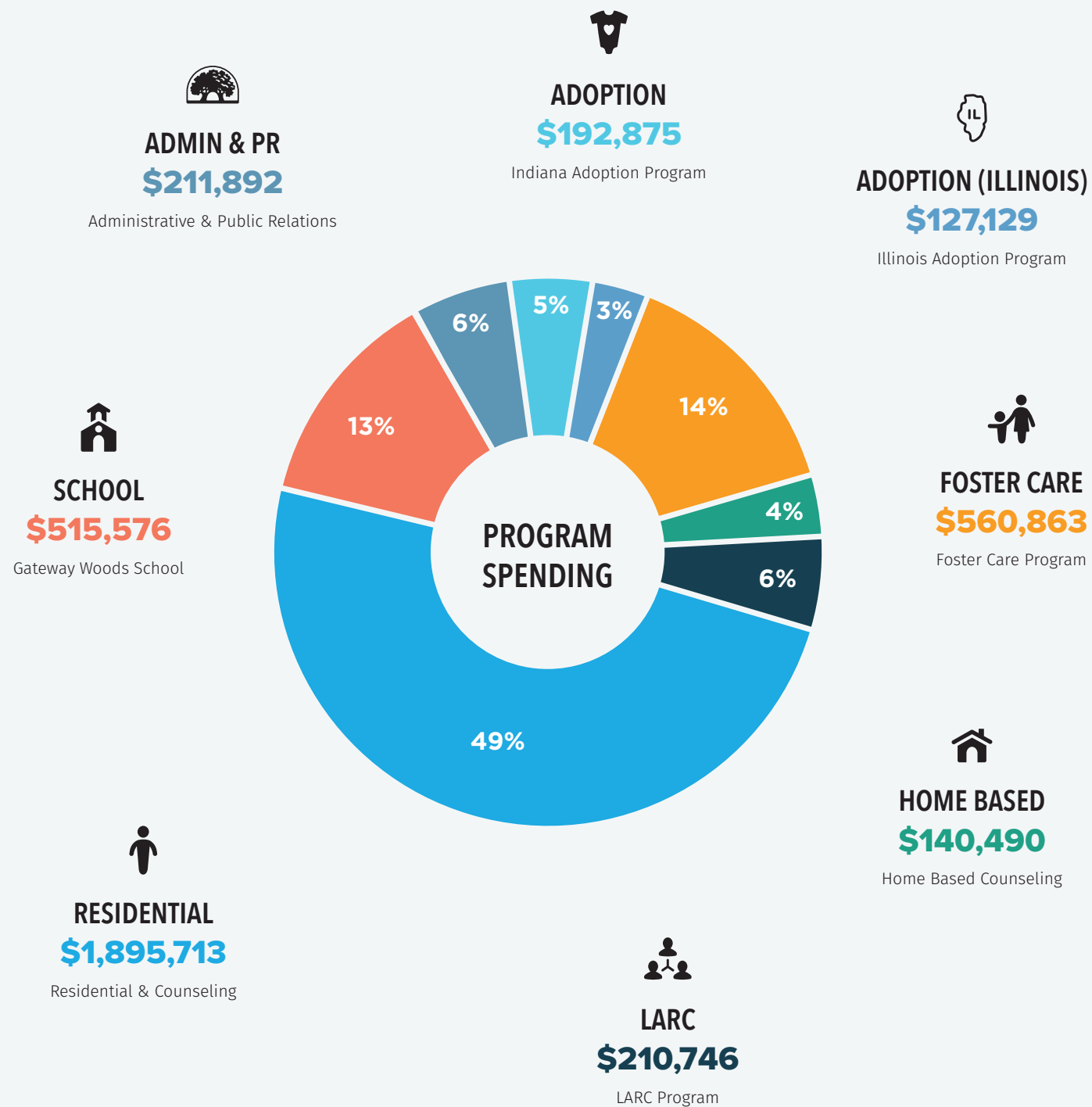


# Where the Money Goes

## \$3,855,284

2017 - 2018 Program Spending



“

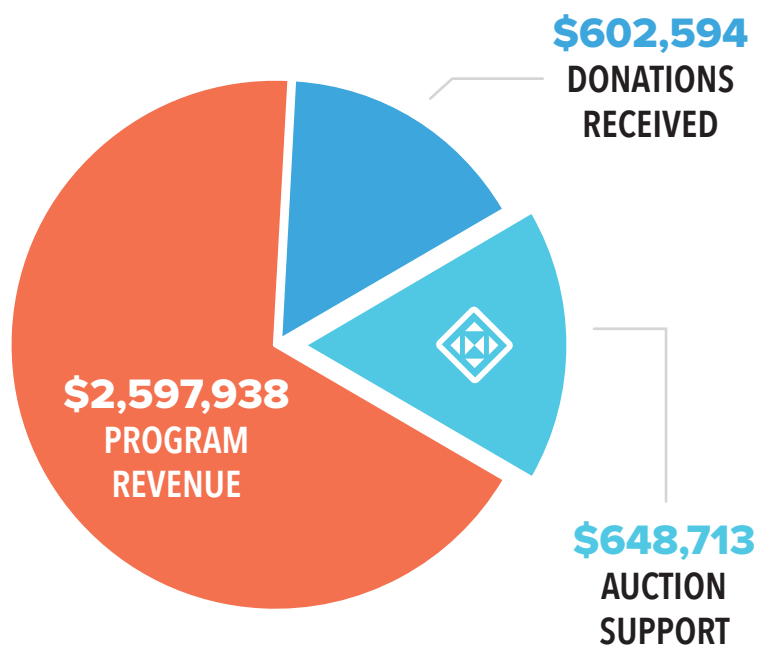
‘Lift up your eyes, and look on the fields; for they are white already to harvest.’  
 John 4:35. Indeed, the fields are ripe and they surround us. I’m so thankful for the vision of those in the church more than half a century ago, who saw the need, felt a conviction and called all of us to action on behalf of children and their families.

ED GRAF (Executive Director)

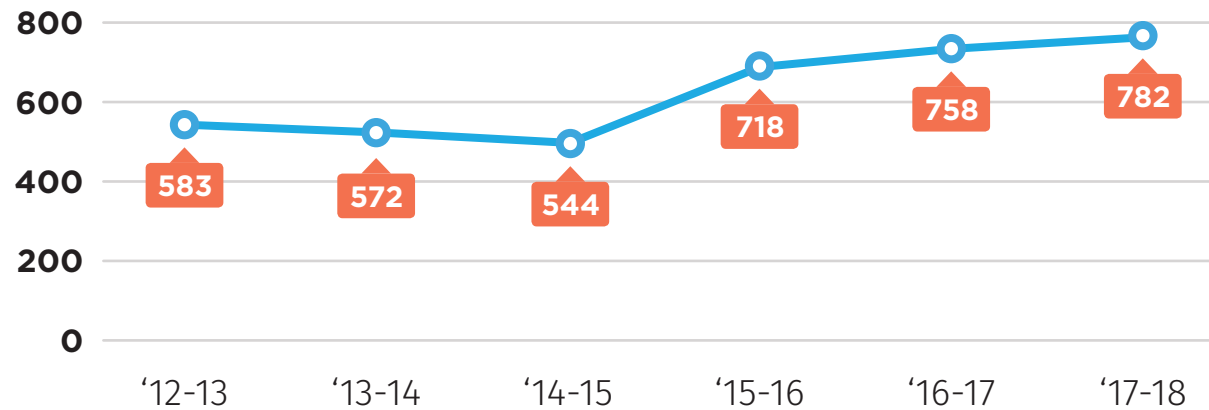
## \$3,849,245

### FUNDING

2017 - 2018 Audited Financials  
 This number represents total revenue for the fiscal year of 2017 - 2018. This encompasses, private donations, program revenue and auction support.



### LIVES TOUCHED



Last 6 Fiscal Years  
 These numbers include family members impacted by all programs.



ANNUAL REPORT

# 2017:2018



GATEWAYWOODS.ORG

CONNECT : GATEWAY WOODS



## RETURNING TO GATEWAY

Emily Fischer, Communications Administrative Assistant



Leyah recalled the life events that brought them to Gateway and the myriad of emotions that were tied to living on campus.

“ I just want to see my old room and remember how God was there even when I didn't want Him.

LEYAH (Former Resident)

Leyah\* and Jordyn\* were nervous. They were returning to the Gateway Woods campus for the first time since they were in the residential program. It had been decades since they had even lain eyes on the campus. And today, they were stepping back in time by coming to the annual Auction.

Leyah had been placed in Maple House, her brother joining her shortly after. Leyah recalled the life events that brought them to Gateway and the myriad of emotions that were tied to living on campus. She wondered if it could be possible to see the inside of Maple House again just for a few minutes.

Somehow, she found a Board Member and timidly presented her request, her nerves trembling. Houseparents were eventually located and a tour was arranged for the both of them. A sense of peace and closure that can't be explained filled Leyah and she went through the rest of the day elated and joyful. While Leyah didn't appreciate her time at Gateway at first, she can look back now and say it was a positive experience. The lessons she learned continue to motivate her decision making today.

We never know how many years will pass until we see the results of the seeds that are being planted in our teenagers. But those results never cease to amaze us! ♦

\*Names were changed for confidentiality.

# GATEWAY WOODS 2017 : 2018 FISCAL YEAR IN REVIEW

LIVES TOUCHED: These numbers reflect all of the lives touched including family members involved in counseling and direct care.

57  
FOSTER CARE  
CHILDREN SERVED



“ We entered this process thinking that we would be able to be in a position to effect children's lives, but the reality is they have effected our lives exponentially more than we could have imagined.

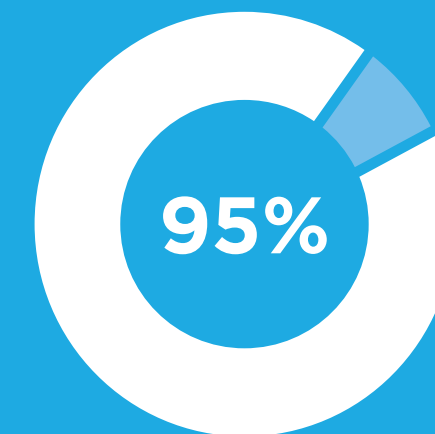
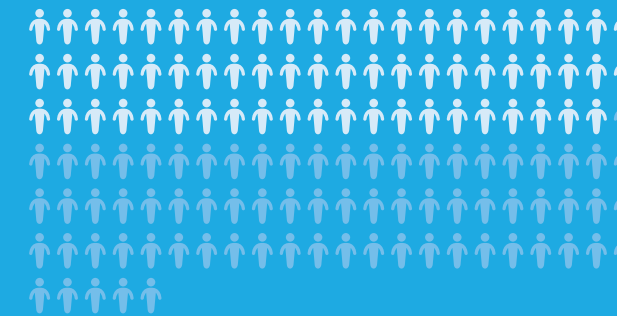
RIK & MEG (Foster Parents)



137

## RESIDENTIAL CLIENTS

65 Residents : 72 Family Members



Residents Presented the Gospel Message

32.5%

## PROFESSED FAITH

Residents in 2017 - 2018



- FARMS -

“ Raising animals or growing vegetables takes patience and hard work. It's very rewarding when customers get excited about what I put so much time into.

DANIEL (Gateway Farms Farmer)

12

RESIDENTS  
EMPLOYED

## HOME BASED

CLIENTS & FAMILY MEMBERS



148

167

Assisted Adoptions



## ADOPTION (INDIANA)

124

Assisted Adoptions  
AdoptionGateway.org



## ADOPTION (ILLINOIS)

43

Assisted Adoptions  
GatewayWoodsIL.org

## OUR : MISSION

“ To honor and obey God by providing help and healing to troubled children and families who then may bless others.



Linking to  
Attain  
Responsibility &  
Community

36

Youth Enrolled  
2017 - 2018

“ For the first time in my life, I feel solid and I know that it is because of what God is doing in my life...but He really used the relationships I have built and opportunities I have through LARC to get me here.

JENNA (LARC Client)