



GATEWAYWOODS

# MEETING AGENDA



Thank you for showing your support by attending the Gateway Woods Representatives Meeting. We hope and pray that you are blessed in your role as a Gateway Woods Representative.

Today you will have the opportunity to really experience the Gateway Woods campus! Our goal is to help you to become a more knowledgeable, passionate and effective Representative.

Once again, thank you for attending this important event. Together, and with God's blessings and provision, we can continue to make a difference in the lives of children and families in need.

Time	Item	Location	Speaker(s)
8:00	Registration	Multipurpose Room	
8:30	Welcome & Procedures	Multipurpose Room	Dave Schumacher & Jon Ringger
8:50	Move to Assigned Houses	Assigned House	
8:55	Breakfast	Assigned House	
9:55	Move to First Station		
10:00-12:00	Counseling Session	School	Amanda Winn & Kristi Baran
	LARC Interview	School	Cordin, Mentor & Mentee
	Rep 101	Board Room	Chad Kaeb
	Professional Foster Care	Cypress House	Dan, Samantha & Schumachers
12:00	Auction	Multipurpose Room	Cyndee Fiechter
12:20	Song & Meal Prayer	Multipurpose Room	Brian Wenninger
12:35	Lunch	Multipurpose Room	

Given the procedures, it is exceptionally important that we remain on time. Please help us to maintain punctuality by keeping good order when moving from station to station around campus. Thank you!

CONNECT : GATEWAYWOODS     

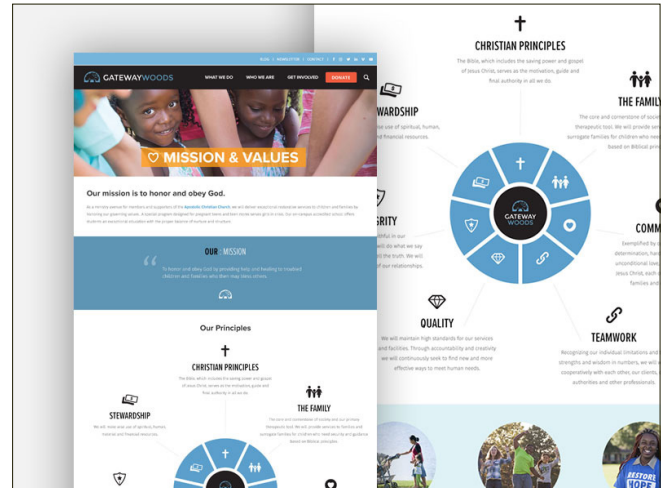
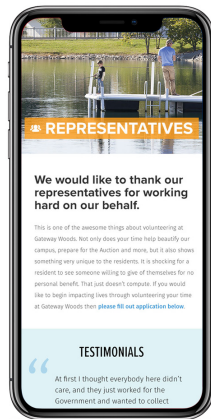
GATEWAYWOODS.ORG

# MISC NOTICES



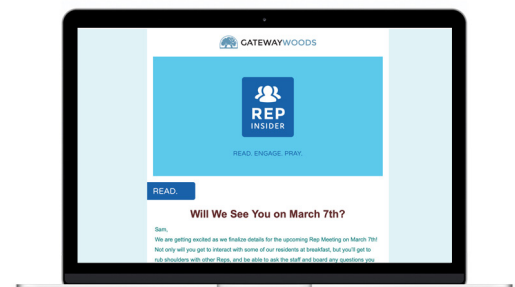
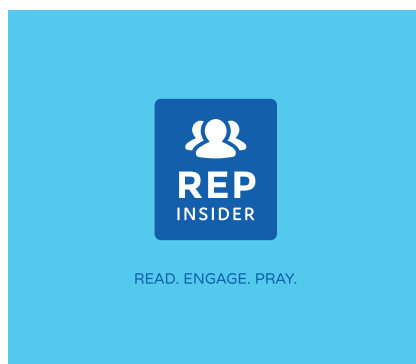
## WEBSITE

*If you haven't already please visit our website.* In the footer we have a link to a page dedicated to our reps. Please go to [gatewaywoods.org/representatives](https://gatewaywoods.org/representatives)



## REP INSIDER

Be on the lookout for exclusive monthly email correspondence – the Rep Insider – that will keep you informed and engaged throughout the year. Each issue also includes prayers requests for each program. *Let us know if you're not receiving these.*



CONNECT : GATEWAYWOODS     

[GATEWAYWOODS.ORG](https://gatewaywoods.org)

# CHURCH PRESENTATIONS



If you have not hosted a **Gateway Woods presentation in your church within the past four years**, (see highlighted) please contact us with a date(s) that work for your church. Presentations can ideally be held on Wednesday nights or weekends, though if another day works better for your congregation please let us know. When possible, we would like to coordinate the presentation around the time of your church's annual Gateway Woods collection.

## CHURCH STATE LAST VISITED

Athens	AL	Mar 2008
Phoenix	AZ	Nov 2016
Prescott	AZ	Nov 2017
Tucson	AZ	Nov 2017
Altadena	CA	Oct 2022
San Diego	CA	Oct 2022
Denver	CO	Oct 2016
Rockville	CT	Mar 2015
Washington	DC	Mar 2017
Ft. Lauderdale	FL	Feb 2022
Ft. Myers	FL	Feb 2022
Sarasota	FL	Jun 2021
Peachtree City	GA	Nov 2019
Bloomfield-Pulaski	IA	Nov 2016
Burlington	IA	Nov 2016
Elgin	IA	N/A
Garden Grove	IA	Nov 2017
Iowa City	IA	Aug 2018
Lester	IA	Oct 2017
Mediapolis	IA	Oct 2016
West Bend	IA	Jan 2019
Belvidere	IL	Aug 2017
Bloomington	IL	Jul 2015
Bradford	IL	Jul 2021
Champaign	IL	Feb 2022
Chicago	IL	Oct 2021
Cissna Park	IL	Mar 2018
Congerville	IL	Jul 2021
Elgin	IL	Apr 2018
Eureka	IL	Feb 2022
Fairbury	IL	Feb 2019
Forrest	IL	Feb 2019
Goodfield	IL	May 2019
Gridley	IL	Sept 2019
Morton	IL	Aug 2018
Peoria	IL	Nov 2016
Princeville	IL	Jul 2021
Roanoke	IL	Apr 2019
Tremont	IL	Oct 2021
Washington	IL	Sep 2017
Bluffton	IN	Feb 2018
Bluffton North	IN	Feb 2018
Francesville	IN	Apr 2015
Indianapolis	IN	Feb 2020

## CHURCH STATE LAST VISITED

LaCrosse	IN	Jun 2021
Leo	IN	Jun 2017
Milford	IN	Jul 2015
Remington	IN	May 2021
South Bend	IN	Oct 2021
Valparaiso	IN	Oct 2021
West Lafayette	IN	May 2018
Wolcott	IN	May 2021
Bern	KS	Oct 2018
Ft. Scott	KS	Oct 2019
Kiowa	KS	Jan 2022
Lamont-Gridley	KS	Jan 2022
Sabetha	KS	Oct 2018
Wichita	KS	Nov 2019
Alto	MI	Jul 2017
Bay City	MI	Apr 2017
Detroit	MI	Apr 2018
Minneapolis	MN	Apr 2017
Morris	MN	Apr 2016
Morris North	MN	Sep 2021
Winthrop	MN	Oct 2017
Kansas City	MO	Jan 2022
Lamar	MO	Oct 2018
St. Louis	MO	Nov 2019
Taylor	MO	Apr 2018
Crogham-Naumburg	NY	Aug 2015
Akron	OH	May 2021
Columbus	OH	Feb 2022
Junction	OH	Jun 2018
Latty	OH	Jun 2018
Mansfield	OH	Apr 2018
Rittman	OH	May 2015
Sardis	OH	Sep 2021
Smithville	OH	May 2018
Toledo	OH	Mar 2022
Portland	OR	Oct 2021
Silverton	OR	Oct 2021
Philadelphia	PA	Nov 2014
Nashville	TN	Jul 2019
Austin	TX	Sep 2021
McAllen	TX	N/A
Zapata	TX	Feb 2004
Clarendon	VT	Sep 2010

CONNECT : GATEWAY WOODS [f](#) [t](#) [i](#) [v](#) [y](#)

GATEWAYWOODS.ORG

# REP JOB DESCRIPTION



## TITLE

Local Church Representative

## RESPONSIBLE TO

Local church body and elder, Gateway Woods Family Services

## GENERAL DESCRIPTION OF POSITION

The Representative or Representative couple will serve in a liaison role to inform and involve the local church in the mission, vision and needs of Gateway Woods.

## RESPONSIBILITIES

1. Communicate to the local church directly or through the local church leadership periodically through the year. Key communications are:
  - a. Pray for the children, staff, board and ministries of Gateway Woods
  - b. Auction
  - c. Staffing needs
  - d. End-of-year information
  - e. Other various needs
2. Support the Annual Auction by:
  - a. Requesting Auction items from the local congregation and local business owners.
  - b. Coordinating transportation of items to the Auction.
  - c. Helping coordinate transportation for large items back to your area for members of your local congregation.
  - d. Volunteering and recruiting others to help the week and/or day of the Auction.
3. Other important events:
  - a. Attend Annual Representatives Meeting regularly
  - b. Work in conjunction with church leadership and Gateway Woods PR staff to organize a church presentation every four years.

CONNECT : GATEWAYWOODS     

**GATEWAYWOODS.ORG**

# WHAT WE DO



Gateway Woods is in the business of restoring hope. While each of our 7 programs is unique in the services it offers, all share the same values and principles in providing Christ-centered family and social services.



## RESIDENTIAL

Provides care for traumatized youth in a caring, Christian environment. In addition to our unique houseparent approach, we also provide individual, group and family counseling, and parent training. A special program designed for pregnant teens and teen moms serves girls in crisis.



## SCHOOL

Our on-campus accredited school offers students an exceptional education with the proper balance of nurture and structure. Additional components include job skills and independent living training plus tutoring and scholarships. Our faculty strives to give each student an academic, moral, and social foundation for a successful future.



## FOSTER CARE

Our highly trained and experienced staff offers specialized and therapeutic foster care through our deeply committed Christian foster families. As a team, we supply all necessary services to meet the physical, mental, emotional, and spiritual needs of children of all ages.



## ADOPTION

We provide quality, affordable and family-focused services for both international and domestic adoptions. Our caring, skilled and diligent professionals make this complex process a successful, affordable and joyous experience.



## LARC

The Linking to Attain Responsibility and Community (LARC) Initiative seeks to develop organic networks between past residents and people in the community. It allows community members to be involved in former clients' lives in meaningful ways such as mentorship or employment. WillowBridge Transitional Housing opened in the fall of 2019 and provides a safe place for vulnerable youth who are aging out of the system to transition to independence successfully.



## FARMS

Gateway Farms exclusively employs teens living at Gateway Woods. The resident-turned-farmers are given job opportunities through agricultural avenues such as raising poultry, planting seeds in the greenhouses, and honing customer service skills through Farmer's Markets and produce basket subscriptions.



## PROF FOSTER CARE

Gateway Woods Professional Foster Care (PFC) exists to provide a safe and stable home for vulnerable youth aged 10-18 where they will experience God's love. We provide Gospel-centered services that encourage and promote the development of these youth.

CONNECT : GATEWAY WOODS     

**GATEWAYWOODS.ORG**

# CAREERS



There is an abundance of hurting children and families in need of help. Come find fulfillment walking alongside them as they find help and hope at Gateway Woods. Find joy as you share the Gospel with those in need of a Savior and be humbled as He shapes your life while doing so. For more information and the other openings please go to [gatewaywoods.org/careers](https://gatewaywoods.org/careers).

Title	Duties	Qualities
<b>Houseparent Couples</b>	As a Houseparent couple, you will hold a parental role in the lives of the children (residents) while they are on campus in your care. You'll provide for the physical, emotional, and spiritual needs of the residents and operate the home in a Godly manner while staying consistent with Gateway Woods policy and state regulations. Some duties may include teaching practical life skills, providing spiritual leadership/guidance, processing through resident choices, and helping with homework.	<ul style="list-style-type: none"> <li>• Good Communicator</li> <li>• Team Player</li> <li>• Self-Motivated</li> <li>• Flexible</li> <li>• Empathetic</li> </ul>
<b>Assistant Houseparent</b>	As an Assistant Houseparent you will help the Houseparents Couples in meeting the physical, emotional, and spiritual needs of the residents in your house while maintaining a Godly culture and adhering to Gateway Woods policy and state regulations. This can include preparing meals, running residents to appointments, helping with homework, and supervision of the residents.	<ul style="list-style-type: none"> <li>• Good Communicator</li> <li>• Team Player</li> <li>• Self-Motivated</li> <li>• Flexible</li> <li>• Empathetic</li> </ul>
<b>GW Farms Assistant</b>	As the Gateway Farms Assistant, you will support the Farms Manager in the operation, resident supervision needs, and logistics of the program. You will help promote the work and products in conjunction with the PR team, maintain positive customer interaction, track farm production sales and expense records, and report resident behavior to the Farms Manager.	<ul style="list-style-type: none"> <li>• Agricultural Acumen</li> <li>• Organized</li> <li>• Resourceful</li> <li>• Creative</li> <li>• Flexible</li> </ul>
<b>Teacher</b>	As a teacher, you will provide instruction and accountability for students, supervise students in the vocational/community service program, and work with staff and volunteers to promote educational, vocational, and independent living skills development.	<ul style="list-style-type: none"> <li>• Organized</li> <li>• Self-Motivated</li> <li>• Team Player</li> <li>• Detail-Oriented</li> <li>• Good Communicator</li> </ul>
<b>Communications Coordinator</b>	As the Communications Coordinator, you will coordinate the production of public relations materials, including the collection of news and stories, graphic design, and dissemination through various channels (digital and printed). You will participate as a member of the Public Relations and Development teams by equipping staff and volunteers with communications tools, help support major events, and coordinate photo and video production.	<ul style="list-style-type: none"> <li>• Creative</li> <li>• Good Communicator</li> <li>• Self-Motivated</li> <li>• Timely</li> <li>• Flexible</li> </ul>
<b>Communications Administrative Assistant</b>	As the Communications Administrative Assistant, you will create, maintain, and implement a communications and social media plan as part of the Public Relations team. You will coordinate the collection, proofreading, and writing of printed and digital content for publication. You will also work with the Public Relations/Fundraising and Admin Teams to coordinate Gateway-hosted events.	<ul style="list-style-type: none"> <li>• Organized</li> <li>• Detail-Oriented</li> <li>• Resourceful</li> <li>• Creative</li> <li>• Good Writer</li> </ul>

CONNECT : GATEWAYWOODS     

**GATEWAYWOODS.ORG**

# SUMMER POSITIONS



Below are some of the summer career opportunities waiting to be filled. For more information and the other openings please go to [gatewaywoods.org/careers](https://gatewaywoods.org/careers).

Title	Duties	Qualities
<b>Summer Volunteer Coordinator</b>	As the Summer Volunteer Coordinator, you have the unique opportunity to lead volunteers to accomplish those many different tasks around campus. Responsibilities include recruiting and orienting volunteers, planning tasks around campus, coordinating meals and lodging for volunteers, and set up weekly Bible studies.	<ul style="list-style-type: none"><li>• Good Communicator</li><li>• Team Player</li><li>• Self-Motivated</li><li>• Flexible</li><li>• Empathetic</li></ul>
<b>GW Farms Summer Intern</b>	As the GW Farms Summer Intern, you will help supervise farmers as needed, report farmer behavior to GW Farms Manager, and support the efficient and therapeutic operation of the farm.	<ul style="list-style-type: none"><li>• Agricultural Acumen</li><li>• Team Player</li><li>• Self-Motivated</li><li>• Flexible</li><li>• Resourceful</li></ul>
<b>Summer Education Intern</b>	As a teacher, you will provide instruction and accountability for students, supervise students in the vocational/community service program, and work with staff and volunteers to promote educational, vocational, and independent living skills development.	<ul style="list-style-type: none"><li>• Good Communicator</li><li>• Team Player</li><li>• Self-Motivated</li><li>• Empathetic</li></ul>

CONNECT : GATEWAY WOODS [f](#) [t](#) [i](#) [v](#) [y](#)

GATEWAYWOODS.ORG



# VOLUNTEER PROGRAM



Each summer, Gateway Woods is blessed with the many volunteers who willingly come and serve. Volunteering at Gateway Woods offers the opportunity to work hands-on for an outreach ministry to troubled children and their families. Some duties volunteers could be expected to perform include: maintenance, helping with childcare, assisting with campus projects, tutoring, and assisting foster parents.

By willingly spending time as a volunteer, you demonstrate to these young people that someone cares enough to get involved. It's a chance to live out the testimony of God's love to the residents and build lifelong relationships with brothers and sisters in Christ. Perhaps most importantly, God will use your experience volunteering to reveal Himself to you in a deeper way.

“

Volunteering is about building relationships with the residents  
and showing them just what it means to be a Christ-follower.

**CLAIRE BERCHTOLD** (2020 Summer Volunteer Coordinator)

If you know of someone who would be interested in volunteering at Gateway Woods, please encourage them to fill out our volunteer application and our volunteer reference form online at [gatewaywoods.org/volunteer](https://gatewaywoods.org/volunteer). Whether it's for a week in the summer, a day in the fall, or once a month, their service is powerful.

CONNECT: GATEWAYWOODS     

**GATEWAYWOODS.ORG**

# ANNUAL AUCTION



On average, the Annual Auction brings in 15-20% of our annual budget and you have a huge role in making that happen! Read through the bullets below – take note of some important changes for this year.

- This year's Auction is **Saturday, August 6, 2022.**
- We encourage mentioning Auction date/request for donated items beginning around mid-May.
- Auction IT has a new look, but should function similar to the previous version. We strongly encourage you to use the AuctionIT Software for entering items, generating item tags, etc. If you have not received any information regarding the AuctionIT software by May 2022, please contact Chad Kaeb (*see below*).
- Please let us know of items coming to the Auction as early as possible. Contact Chad Kaeb or by entering information in AuctionIT. **Items must be registered by 10:00 p.m. on Saturday, July 30th if they are to be listed in the Auction Booklet.**
- Please submit photos and/or descriptions of vacation spots, items of significant value, and/or unique Auction items to Chad Kaeb so that they can be displayed in our various Auction publications. **Please submit these as early as possible! Before the end of June is ideal, as promoting in these areas can help the item sell better.**
- In past years we have been blessed to have several congregations and individuals send a cash donation to the Auction Committee requesting that the cash be used to purchase items for the Auction. **While the committee is happy to oblige, we would strongly encourage finding someone in your congregation who loves to shop and find bargains and would consider buying items for the auction representing your congregation** (suggestions for items can be provided). In order to make best use of the funds we ask that they be sent to Gateway Woods and designated for "Auction Items" **by no later than July 15, 2022.**
- Items need to be new or antique and need to have an item tag, which can be printed off of AuctionIT (*preferred*) or written by hand. Antique items should be at least 45-50 years old and in excellent condition.
- Tools, children's items, recreation items (**camping equipment, bicycles, volleyball and baseball equipment etc.**), and electronics are some items that have gone particularly well in the past. **We strongly discourage** accepting collectibles (*figurines, plate collections, etc.*) for the Auction as they are difficult to sell.
- If you are interested in taking on a leadership role for the Auction we would love to hear from you! Please contact Jeremy & Kristi Reinhard.
- If you are interested in **volunteering for the Auction** please visit: (<https://gatewaywoods.ivolunteer.com>)

## KEY AUCTION CONTACT

### Auction Coordinators

Jeremy & Kristi Reinhard  
260.273.0903 (Jeremy)  
574.518.4695 (Kristi)  
GWAuctionCoordinator@gmail.com

### Item Coordinator

Joanne Gerber  
260.273.7395  
GWItemCoordinator@gmail.com

### Staff Auction Contact

Chad Kaeb  
260.376.1713  
chad.kaeb@gatewaywoods.org

### Volunteer Coordinator

Janice Anliker  
260.376.1742  
GWAuctionVolunteer@gmail.com

CONNECT : GATEWAY WOODS     

GATEWAYWOODS.ORG

# SOWERS OF HOPE



*Vulnerable youth like Rosie are waiting on YOU to make a move.* By signing up to be a monthly giver, you can be all the difference they need.

As a Sower of Hope, giving what you can every month, you will receive regular communications that will keep you connected to the mission of Gateway Woods and gain a deeper understanding of how your support makes an eternal difference. Sign up today to receive a special gift as a reminder to pray for the youth you are impacting.

Visit our website [gatewaywoods.org/sowers-of-hope](https://gatewaywoods.org/sowers-of-hope) to become a Sower of Hope today.





**NEW MONTHLY GIVING PROGRAM**  
[gatewaywoods.org/sowers-of-hope](https://gatewaywoods.org/sowers-of-hope)

CONNECT: GATEWAY WOODS     

**GATEWAYWOODS.ORG**

# GIVING OPTIONS



## WAYS TO GIVE

- **Online** at [gatewaywoods.org/donate](https://gatewaywoods.org/donate)
- **By Mail** where donations can be made by sending a check made payable to: Gateway Woods, P.O. Box 151, Leo, IN 46765.
- **Automated Giving via EFT** provide an easy way to sign up for recurring monthly debits from your checking or savings account. All gifts are tax-deductible and you will receive a receipt for your records.

## OTHER PLANNED GIVING OPTIONS



### Establish a Will

Every adult should have a will to provide for their family and loved ones upon their death. A will enables you to extend your stewardship legacy beyond your lifetime while ensuring your desires are fulfilled.



### Securities

Giving long-term appreciated securities such as stocks or bonds is an easy way to make a difference. This option provides an immediate charitable tax deduction and potential capital gains tax savings.



### Farm

Farming presents special opportunities to make donations and reduce taxes. Making a gift of farm products such as grain, dairy, honey and more will not only bless Gateway but also provide tax benefits.



### Annuities

Gift annuities are a great way to help Gateway Woods while securing your future. It provides guaranteed fixed payments for life and frees you from managing funds that you intend to eventually give away.



### Charitable Trusts

Charitable trust giving options offer a way to set aside and direct how your assets can be used for the benefit of charities. They also provide payments to non-charitable parties, such as heirs or back to you.

## MATCHING GIFTS

Many companies offer matching donations towards charitable organizations. Please consider making a gift towards our accredited Gateway Woods School. Your donations will help to better the education of our students.

Gateway Woods is committed to handling your donation with the utmost respect for the Bible's teachings on wealth. Your investment impacts the lives of the hundreds of children and families each year. In order to facilitate certain planned gifts we can work in cooperation with numerous professionals including The Apostolic Christian Endowment and The National Christian Foundation.

CONNECT : GATEWAY WOODS [f](#) [t](#) [@](#) [v](#) [v](#)

**GATEWAYWOODS.ORG**

# SCHOLARSHIPS



## PURPOSE

Gateway Woods supports the education of students enrolled in undergraduate or post-graduate work leading to a degree in the social services field. The purpose of the scholarship is to:

- Encourage Apostolic Christian Church members and their children who attend on a regular basis to work in social services nationwide.
- Encourage Apostolic Christian Church members to consider employment at Gateway Woods.

## ELIGIBILITY

Any member of the Apostolic Christian Church of America, or regular attendee, who attends on a regular basis, is welcome to apply. Consideration is given to faith, commitment, clarity of education and career vision, work and volunteer experience related to the field, and financial need. Awards have most often been given to upperclassmen/women and graduate students.

## AWARDS & PROCEDURE

These scholarships can be used to pay for tuition, books or other related educational costs. Applications should be received by Gateway Woods no later than June 17, 2022. Applicants and recipients are invited to reapply.

## GATEWAY WOODS EMPLOYMENT

There is no employment commitment on behalf of Gateway Woods associated with the award of a scholarship. We encourage anyone who receives a scholarship to consider a staff position at Gateway Woods in the future.

## APPLICATION

Please visit our website to download an application [gatewaywoods.org/scholarships](https://gatewaywoods.org/scholarships)






# PRAYER LIST



## BOARD MEMBERS

Dave Schumacher ( <i>Chairman</i> )	Duane Sinn ( <i>Vice Chairman</i> )	John Frauhiger ( <i>Secretary</i> )	Gary Rassi ( <i>Treasurer</i> )
Dustin Hodel	Staci Fiechter	Sarah Knochel	John Teubel
		Jason Kilgus	Jay Maibach

## HOUSES

House	Houseparents	Houseparent Children on Campus	Residents
	Phil & Janean Gerber (Lead HP) Kirk & Jeana Steidinger (Alternate HP) Gabriella Wiegand (Assistant HP)	Mayve & Emberton (Gerber children) Emerson, Elliot & Graham (Steidinger children)	Alexis, Acacia (Santiago), Jayla
	<i>House is closed due to staff shortage.</i>		
	Seth & Hannah Bollier (Lead HP) Pete & Jolene Zimmerman (Alternate HP) Amber Ehnle (Assistant HP)	Finn & Dex (Zimmerman children)	Dimond, Logan, Aurora, Braxton
	Clint & Sydnee Schumacher (Lead Foster Parents) Nathan & Michelle Braker (Alternate Foster Parents)	Navie & Briggs (Schumacher children) Gideon, Aurelia & Elodie (Braker children)	Dekkon, Juan, Errion
	Kyle & Lindsey Isch (Lead HP) Jalynne Hinrichs (Assistant HP)	Murphy & Maisy (Isch children)	Amy, Corey, Cecelia, Dareen'n, Breon

CONNECT : GATEWAY WOODS     

GATEWAYWOODS.ORG

# PRAYER LIST



## FOSTER CHILDREN

Reagan	Andrew	Elaine	Kassie	Lulu	Drake	Joseph	Denver	Karli	Eric	Chey	Jason	Ireland	Peggy
Becky	River	McKenzie	Jose	Jake	Janae	June	Jose	Jack	Annie	Evie	Kenzie	Derrick	Kallie

## FOSTER PARENTS

Brad & Sonya	Seth & Hannah	Nathan & Michelle	Tim & Shannon	Jordan & Jessica	Charles & Chelsea	Rik & Meg	Lauren	Aaron & Kara	Amber
Corey & Sarah	Lloyd & Stephanie	Marc & Sheila	Doug & Rebecca	Eric & Tomeka	Mitch & Bre	Chris & Kati	Andrea	Brandon & Nicole	Rex & Allegra
Alex & Bethany	Tyler & Lindsey	Zane & Danielle	Jason & Jen	Jarrod & Shannon	Kevin & Michele	Nathan & Megan	Ryan & Katie	Roger & Meg	Leslie
Spencer & Amanda	Justin & Samantha	Bart & Michele	Clint & Sydnee	Adam & Tracy	David & Angie	Riley & Bre	Clayton & Rachel	Randall & Serena	

## NON-HOUSEPARENT STAFF

Ed Graf (Executive Director)	Mark Maibach (Chief Financial Officer)	Jeff Waibel (Director of Residential Services)
Chad Kaeb (Development Director)	Shanna Conner (Adoption Supervisor)	Nichole Suvar (Systems Coordinator)
Brock Williamson (Director of Education)	Kristin Walko (Dean of Students)	Keith Schambach (Manager of Compliance & Maintenance)
Rob Parker (LARC Director)	Travon Erickson (LARC Coordinator)	Danielle Wirtz (Foster Care Case Manager)
Emily Wiegand (Teacher)	Janice Anliker (Residential Support Staff)	Cordin Koch (LARC Coordinator)
Megan Schnurr (Foster Care Case Manager)	Margie Dawson (Teacher)	Justin Walton (GW Farms Intern)
Heidi Knapp (IL Adoption Case Manager)	Michelle Norman (Foster Care Case Manager)	Jon Ringger (Communications Coordinator)
Beth Ringger (Adoption Case Manager)	Samantha Erickson (Foster Care Supervisor)	Heather Beer (Business Coordinator)
Hannah Beer (Office Coordinator)	Luci Koch (Illinois Executive Director)	Katie Kaufmann (IL Adoption Case Manager)
Laura Steffen (Teacher)	Traci Steidinger (Counseling Assistant)	Ryan & Bekah Shaffer (WillowBridge Community Advocates)
Amanda Winn (Counselor)	Toby Steidinger (Residential Case Manager)	Emily Fischer (Communications Admin Assistant)
Kristi Baran (Counselor)	Jesse Zimmerman (Houseparent Manager)	Lydia Williamson (Adoption Case Manager)
Quinn Steffen (Development Coordinator)	Charla Leman (Supervising Counselor)	Amy Austin (Foster Care Case Manager)
Eric Bahler (GW Farms Manager)	Jill Hire (Residential Nurse)	
Dan Sparling (Director of Child Placement)	Sean & Sara Ryan (WillowBridge Community Advocate Support)	

# REP LIST



Region	Board Member	Representatives	Church	Phone	Email
Region 1	Jason Kilgus	Mick & Brooke Gerber	Leo	260-273-2241	mickgerber@att.net
Region 2	Staci Fiechter	Klayton & Taylor Kershner Darren & Amanda Drayer	Bluffton Bluffton North	260-307-6195 260-307-3085	ktkershner@gmail.com drd2october@gmail.com
Region 3	TBD	Evan & Marisa Kaeb Trent & Katie Bahler Joe & Jackie Feller Shane & Alyssa Bahler Sarena Wahl	Indianapolis Remington Valparaiso Wolcott West Lafayette	219-204-8627 574-870-0989 219-464-8719 219-863-4259 260-633-1756	ewkaeb95@gmail.com trentbahler@hotmail.com joetirefeller@hotmail.com sbahler12@gmail.com sarenawahl@gmail.com
Region 4	John Frauhiger	Marty & Angie Neihouser Dean & Alyssa Nelson Bill & Judy Longcor Jason & Jessica Isch	Francesville LaCrosse Milford South Bend	219-204-0083 219-766-0264 574-658-9525 260-820-1533	mneverhome@yahoo.com deancnelson13@yahoo.com longcor@hotmail.com jisch@manchester.edu
Region 5	Duane Sinn	Tim & Nada McMillan Wendell & Kari Spangler Kirk & Eileen Stoller Archie & Amber Tucker	Columbus Junction Latty Mansfield	614-289-3077 419-399-4383 419-786-9534 419-892-5762	tmc0923@gmail.com drwendell@windstream.net kestoller4@yahoo.com christianmomx4@gmail.com
Region 6	Jay Maibach	Brad & Amanda Gasser Leon & Lori Rufener Matt & Dawn Brake Matt & Jessica Maibach	Akron Rittman Sardis Smithville	330-464-5964 330-927-1478 740-483-1201 330-749-3473	brad.gasser@outlook.com lorufener@yahoo.com dawnbrake06@gmail.com mmaibach0407@gmail.com

CONNECT : GATEWAY WOODS     

GATEWAYWOODS.ORG



## REP LIST



Region 7	Sarah Knochel	Jim & Maria McCormick Shawn & Kelly Curtis Jason & Carrie Rauhe Doug Jr. & Brooke Harmon	Alto Bay City Detroit Toledo	616-666-0119 989-415-6601 248-763-4711 419-266-2556	jpmccormick90@gmail.com kellymcurtis99@gmail.com rauhejas@yahoo.com djharmon09@aim.com
Region 8	John Teubel	Rick & Michelle Kaisner Matt & Renee Schambach Lynwood & Jamie Schambach Martin & Trish Steidinger Kent & Paulette Zimmerman Roger & Kathy Wiegand Sam & Elizabeth Bachtold	Chicago Elgin Elgin Fairbury Forrest Gridley Belvidere	847-942-1174 815-784-6282 630-212-3951 815-692-4081 815-848-4350 309-747-2897 815-623-1059	rick@kaisner.org mschambach@bsc-cpa.com ljschambach@gmail.com mtsteid184@gmail.com kpzimm6@yahoo.com rkwegand@gmail.com amote7@earthlink.net
Region 9	Gary Rassi	Alan & Wendy Edelman James & Marlene Steidinger Trevor & Amy Kaeb Nathaniel & Tressa Leman Trent & Emily Stuber Brent & Janelle Young	Bloomington Bloomington Cissna Park Morton Tremont Champaign	815-657-7501 815-692-4424 815-549-0023 309-303-2175 309-241-4087 815-848-3787	alanedelman@sbcglobal.net jmsteid@frontier.com trevorkaeb@gmail.com tressa.nathaniel@gmail.com tastuber@haasit.com brentandjanelle@gmail.com
Region 10	Dustin Hodel	Daniel & Tory Currier Tim & Traci Leman Erik & Carrie Wiegand Dustin & Mandy Hodel	Congerville Eureka Goodfield Roanoke	309-550-4875 309-303-6678 260-740-8512 260-797-9241	dacurrier@gmail.com tntleman@live.com eriklee76@gmail.com dustinhodel84@gmail.com
Region 11	Dave Schumacher	Leslie & Barbara Fehr Karl & Monica Kirsch Dennis & Renee Herrmann Seth & Chelsea Teubel	Bradford Peoria Princeville Washington	815-646-4536 317-371-9096 309-249-6784 419-796-9992	fehrfarm@gmail.com k.kirsch4@gmail.com drherrmann@juno.com crw1019@gmail.com

CONNECT : GATEWAY WOODS     

GATEWAYWOODS.ORG

# PROGRAM IMPACT



## SCHOOL

### Ages served

- 12-18 years of age

### Needs Met

- Credit recovery
- Education from a Christian perspective
- Tutoring

### Clients Served in 2021

- 42 students

GATEWAYWOODS.ORG

# 42

STUDENTS IN 2021



## FARMS

### Ages served

- 16-18 years of age

### Needs Met

- Employee development for residents
- Community relationships
- Meets Gateway's core values

### Clients Served in 2021

- 75 produce basket subscriptions
- 1,700 customer connections

GATEWAYWOODS.ORG

# 13

RESIDENT FARMERS



CONNECT: GATEWAYWOODS     

GATEWAYWOODS.ORG

# PROGRAM IMPACT



## RESIDENTIAL

### Ages served

- 12-18 years of age

### Needs Met

- Pregnant teens & teen mom parenting
- Trauma-informed counseling
- Mental health care
- Relationship building
- Independent living skills

### Clients Served in 2021

- 42 residents
- 46 family members

[GATEWAYWOODS.ORG](https://gatewaywoods.org)

# 42

RESIDENTS



## PROFESSIONAL FOSTER CARE

### Ages served

- 10-18 years of age

### Needs Met

- Trauma-informed counseling
- Mental health care
- Relationship building
- Family

### Clients Served in 2021

- 3 foster youth

[GATEWAYWOODS.ORG](https://gatewaywoods.org)

# 2021

NEW IN DECEMBER



CONNECT : [GATEWAY WOODS](https://gatewaywoods.org)     

[GATEWAYWOODS.ORG](https://gatewaywoods.org)

# PROGRAM IMPACT



## LARC

### Ages served

- Former residents of any age

### Needs Met

- Mentorship
- Tutoring
- Employment
- Independent living skills
- Church family

### Clients Served in 2021

- 50 mentors
- 80 youth served since 2015

GATEWAYWOODS.ORG

# 50

MENTORS



## WILLOWBRIDGE

### Ages served

- 18-25 years of age

### Needs Met

- Safe, stable housing
- Mentorship
- Community relationships
- Spiritual growth

### Clients Served in 2021

- 11 tenants

GATEWAYWOODS.ORG

# 11

TENANTS



CONNECT: GATEWAYWOODS     

GATEWAYWOODS.ORG



# PROGRAM IMPACT



## ADOPTION

### Ages served

- All ages

### Needs Met

- Financial assistance for expectant parents
- Home study and post-placement services for adoptive families (*intercountry and domestic*)
- Forever Christian homes for vulnerable children

### Clients Served in 2021

- 111 families used our IN adoptive services
- 45 families used our IL adoptive services

GATEWAYWOODS.ORG

# 156

ASSISTED ADOPTIONS



## FOSTER CARE

### Ages served

- Infant-18 years of age

### Needs Met

- Trauma-informed care
- Relationship building
- Safe, stable home environment
- Love of a Christian family

### Clients Served in 2021

- 73 youth placed in foster care homes
- 640 youth served since 1989

GATEWAYWOODS.ORG

# 73

YOUTH SERVED



CONNECT : GATEWAY WOODS     

GATEWAYWOODS.ORG

# FEEDBACK



Thank you for attending the 2022 Rep Meeting today!

Whether it's your first Rep Meeting or you've been coming for years, we hope you came away inspired and informed from engaging with the staff, residents, and fellow Reps on campus. We'd love to hear your thoughts about today through the survey linked in the QR code below. Your feedback helps us select the topics and make improvements for the next year.

*We've got two \$10 e-gift cards to give away to thank you for your participation so scan the QR code below to complete the survey for your chance to win:*



(<https://bit.ly/3hBJ1SQ>)

CONNECT: GATEWAYWOODS     

GATEWAYWOODS.ORG